



William Curtis, oil on canvas

### ***Pemaquid Art Gallery (3)***

The Pemaquid Art Gallery was founded by local artists from New Harbor in July 1929. The present gallery building was opened in 1960 continuing the gallery's distinction as the oldest existing art society in the State of Maine. The exhibitions reflect both traditional and contemporary approaches to the art of today. During a visit to the

gallery, you will see watercolor, marquetry, oil, pastel, woodturning, drawings, and ceramics. All artists are local, full or part-time residents, and have been juried in to the group. Open daily from 10am - 5pm from June - October. Visit us at [www.pemaquidartgallery.com](http://www.pemaquidartgallery.com)

### ***Learning Center (2)***

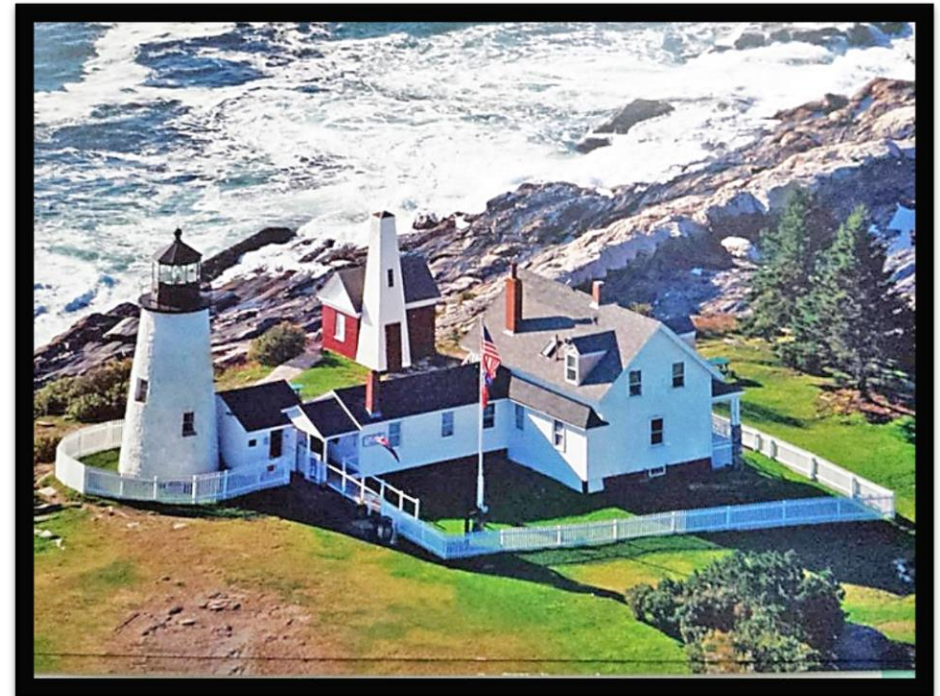
The Learning Center houses artifacts from The Fishermen's Museum, shows a video "loop" of lighthouses in Maine, provides a display of the dangers of walking on the rocks and serves as a venue for summer Movie Nights & other events. This space is also available to rent - contact Bristol Parks and Recreation at [bristolparks@tidewater.net](mailto:bristolparks@tidewater.net) for more information.

### ***Park Information/Rules:***

- Open daily 9am-5pm May through October.
- \$3.00 Entrance fee per person for anyone 12 years and older (cash or check only)
- Merchandise for sale at the ticket booth (T-shirts, sweatshirts, etc.)
- Dogs are allowed on a leash.
- Smoking and the use of all tobacco products are prohibited.
- No drones
- No vending
- Please do not disturb wildlife in the park.
- **For the safety of our visitors, please stay off rocks when there is high surf. There is a very real danger of being washed off the rocks if you walk too close to the water. The lower rocks are slippery, and even though the sea may not appear rough, an occasional rogue wave washes in unexpectedly and reaches higher points on the rocks. PEOPLE HAVE LOST THEIR LIVES HERE FROM THESE WAVES!!**
- Visit the Pemaquid Point Webcam at [www.pemaquidpoint.org/wc.php](http://www.pemaquidpoint.org/wc.php)



# ***Pemaquid Point Lighthouse Park***



The town of Bristol owns and maintains this beautiful park for your enjoyment. Take a tour of the Lighthouse Tower, visit the unique Fishermen's Museum in the Keeper's House, and view work of local artists in the Art Gallery. Or simply have a picnic while overlooking the water and soak in the surrounding beauty. All of our parks are smoke free to ensure a safe environment for our visitors. No matter how you spend your time here, please enjoy yourself and let our friendly staff know if you have any questions! You are welcome to keep this brochure or return it to the booth on your way out so it can be reused or recycled.

Thank you!



## ***Lighthouse Tower (5)***

The Lighthouse Tower is owned by the Coast Guard, leased to the American Lighthouse Foundation ([www.lighthousefoundation.org](http://www.lighthousefoundation.org)) and maintained by the Friends of Pemaquid Point Lighthouse. The light was originally lit by oil, then kerosene, then electrified, becoming automatic in



*Photograph by Joan Atkinson*

1934. It can be seen for 14 miles in clear weather. The light is a familiar navigational aid to fishermen and all coastwise traffic. It warns of the dangers of rugged, treacherous rocks upon which it stands. Admission to the tower is free but donations are greatly appreciated. Open daily

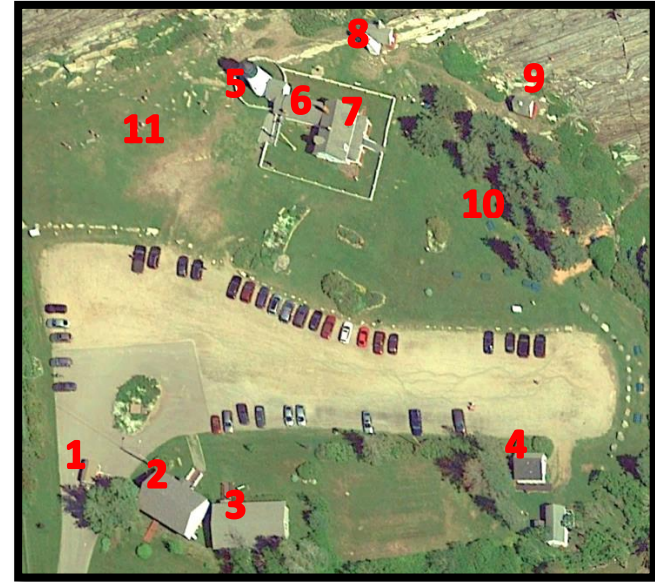
10:30am-5pm Memorial Day to Columbus Day, weather

permitting. Call #(207) 677-3499 for special off-hour tours.

## ***The Fishermen's Museum (6)***

The Fishermen's Museum opened in 1972 and collects and preserves historical data and artifacts related to the fishing industry in the Bristol area. Organized, directed, and staffed by Bristol residents, the Museum quickly became the primary archivist for the fishing heritage of the Pemaquid area. The Museum is housed in the Lighthouse Keeper's House on the ground floor and has focused on preserving the fishing and marine heritage of the Bristol area with displays, models, dioramas, and photographs. Included in the collection are captains' logs and historical articles about the many ships wrecked on or near the lighthouse rocks, along with an extensive number of photos and other historical artifacts and information about the Pemaquid Point Lighthouse. No admission is charged for the museum so it is entirely dependent on donations. Please visit [www.thefishermensmuseum.org](http://www.thefishermensmuseum.org) for additional information, photographs and archival documents relating to the history of Bristol and the Pemaquid area.

## ***Map of Lighthouse Park***



- |                                    |                          |
|------------------------------------|--------------------------|
| 1- Ticket Booth                    | 8- Bell Tower            |
| 2- Learning Center                 | 9- Oil House             |
| 3- Pemaquid Art Gallery            | 10- Picnic Area          |
| 4- Restrooms                       | 11- Event/Gathering Area |
| 5- Lighthouse Tower                |                          |
| 6- Fishermen's Museum              |                          |
| 7- Keeper's House Rental Apartment |                          |

## ***Other Park Services***

**Keeper's House Rental Apartment (7)**- the rental apartment in the Keeper's House is available to rent year-round for \$1,300/week or \$200/night. Please contact Newcastle Vacation Rentals for more information or reservations at [nvr@mainecoastcottages.com](mailto:nvr@mainecoastcottages.com).

**Weddings** - Lighthouse Park is a magical place for a wedding. Please contact our wedding coordinator, Melanie Tilton, at [melanietilton0@gmail.com](mailto:melanietilton0@gmail.com), (207) 586-5002, for more information regarding rates and available dates or visit <https://www.bristolmaine.org/parks-recreation>.